

# Accessing CC Suite



## Accessing Creative Cloud Suite Software

### How to sign into Adobe Creative Cloud Suite Software

This guide is for staff and students using SHU PCs **on campus**

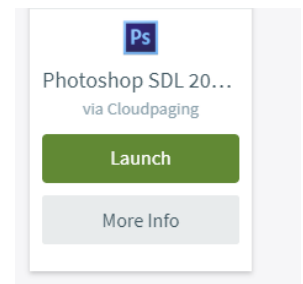
#### 1. For Windows PCs

Go to AppsAnywhere <https://appsanywhere.shu.ac.uk/>

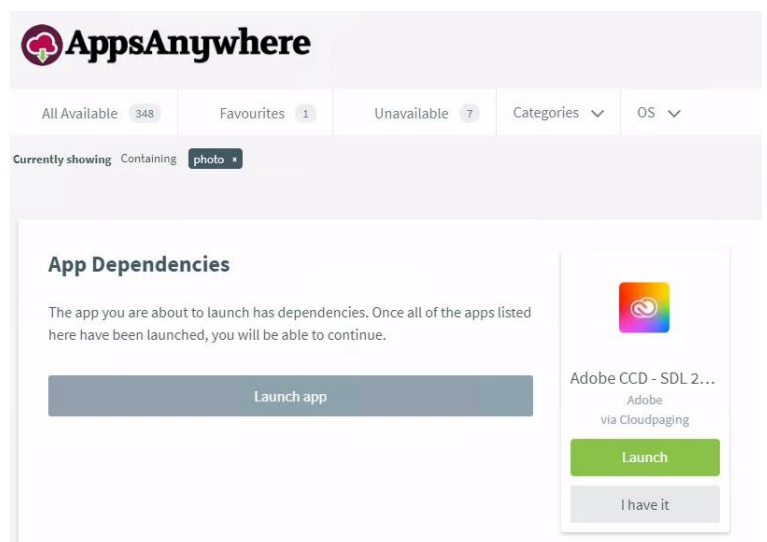
Wait for your session on AppsAnywhere to successfully validate; a green banner will appear at the top of the page when this has completed.



2. You can either search for the Application you want or type Adobe into the search box to see all the Adobe Applications i.e. like Photoshop. Click on Launch



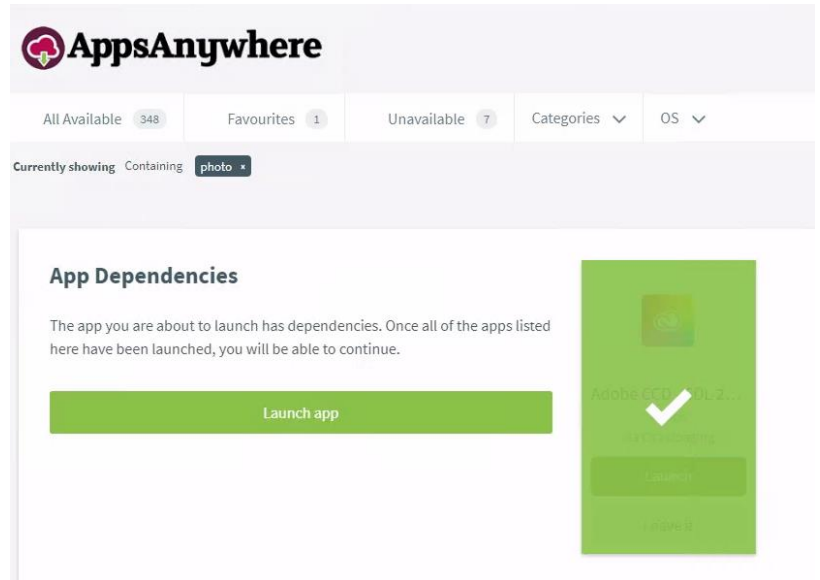
3. The following page will open on AppsAnywhere informing you that before you can launch an Adobe Application you need to launch the Adobe Creative Cloud Desktop App which is often abbreviated to CCD



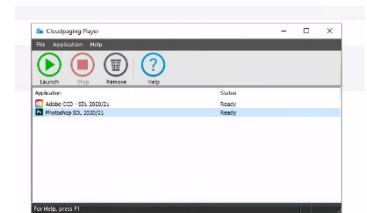
For more help  
contact [IT Help](#)

# Accessing CC Suite

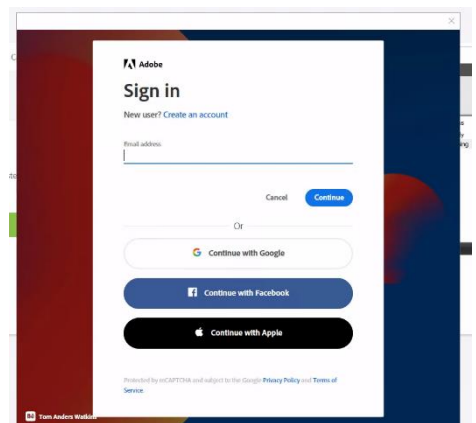
- Click on Launch for the CCD application first  
Once the CCD App Has launched, you can then launch the main application you want to use.  
i.e. Photoshop



- The Cloud Paging Player will launch and show you when the applications are ready to use.



- Once the Adobe App has launched you need to sign in to use the software.  
Use the following Email Address format [Username@hallam.shu.ac.uk](mailto:Username@hallam.shu.ac.uk) and click continue



- The Adobe Application will now launch.  
Known Error – I see an information error.



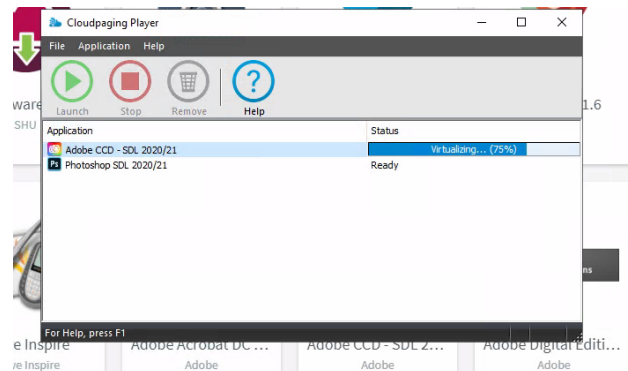
For more help  
contact [IT Help](#)

# Accessing CC Suite

8. To fix this look at the Cloud Paging player by clicking on the pale blue icon on the taskbar



9. Sometimes the Adobe Application will load and launch before the CCD application is fully ready like in the image, wait for this to have a status of Ready and then click Launch and the software will load and take you to the sign in page.



For more help  
contact [IT Help](#)