

Installing SPSS on your PC

Installing software SPSS on your home computer

Please request SPSS from the [IT Service Desk](#). Links provided last 2 weeks, please download as soon as possible.

Installing SPSS

The IT Service Desk will contact you with the download links and instructions. Before installing the software, please ensure you read the Copyright Acknowledgement for details on permitted use. If you are conducting research, you must ensure your use is permitted under terms [here](#). If you are unsure, please contact the Service Desk.

1. Once you are satisfied you meet the requirements for the software, please scroll down to 'Download Links' in the email.

2. Click the link that corresponds with your Operating System.

Click here to see how to check if you are running 64 or 32bit.

DOWNLOAD LINKS:

SPSS 24 Windows (64 bit) download:

<https://zendto.shu.ac.uk/pickup.php?claimID=&claimPasscode=emailAddr=sls-exchange.shu.ac.uk>

SPSS 24 Windows (32 bit) download:

<https://zendto.shu.ac.uk/pickup.php?claimID=&claimPasscode=emailAddr=sls-exchange.shu.ac.uk>

You will be directed to SHU licensed file sharing site 'ZendTo'.

3. Click check box to prove you are a person and then 'Pick up files'

You should be logged in automatically but sometimes you may be asked to enter a claim ID and password. This can be found from the link provided.

e.g:

[https://zendto.shu.ac.uk/pickup.php?claimID=123456789
&claimPasscode=987654321&emailAddr=sls-sdprivate-m
b%40exchange.shu.ac.uk](https://zendto.shu.ac.uk/pickup.php?claimID=123456789&claimPasscode=987654321&emailAddr=sls-sdprivate-mb%40exchange.shu.ac.uk)

Claim ID: 123456789

Claim Passcode: 987654321




Pick-up the File(s)

If you are still unable to access the site, it is likely the links have expired and will need to be requested again.

For more help
contact [IT Help](#)

Installing SPSS on your PC

4. Click the link for 'SPSS_Statistics_24_win64/32.exe'. You will need the patch file later in the process.

Filename	Type	Size	Description
 24.0-IM-524STATC-WIN64-FP002.exe	application/octet-stream	715.4 MB	SPSS 64 bit patch - run following main install
 IBM SPSS Academic Licence - Copyright Acknowledgement.docx	application/vnd.openxmlformats-officedocument.wordprocessingml.document	69.1 KB	Academic licence
 SPSS_Statistics_24_win64.exe	application/octet-stream	847.1 MB	SPSS 64bit main install

A bar with file options will appear at the bottom of the screen.

5. Click 'Save'

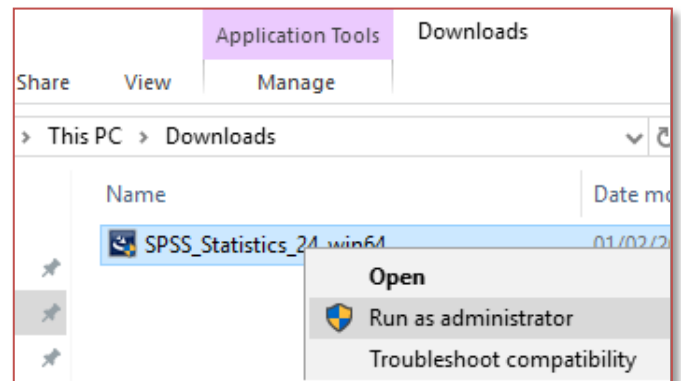
The file will begin downloading. Once complete, the options will change.

6. Click 'View Downloads'

7. Right click on the file and select 'Run as Administrator'

You may need to hold down the Shift Key on your keyboard while you click for this option to show.

The installation wizard will load and begin extracting.



8. Click 'Next'

9. Next you will see a licence agreement. Please ensure this is read and understood. If you are happy with the terms, please accept it and click 'Next'

10. You will then be asked if you would like to also install Essentials for Python, this is optional. Click 'Next'

The installation wizard will now show as 'Ready to Install'

11. Click 'Install'

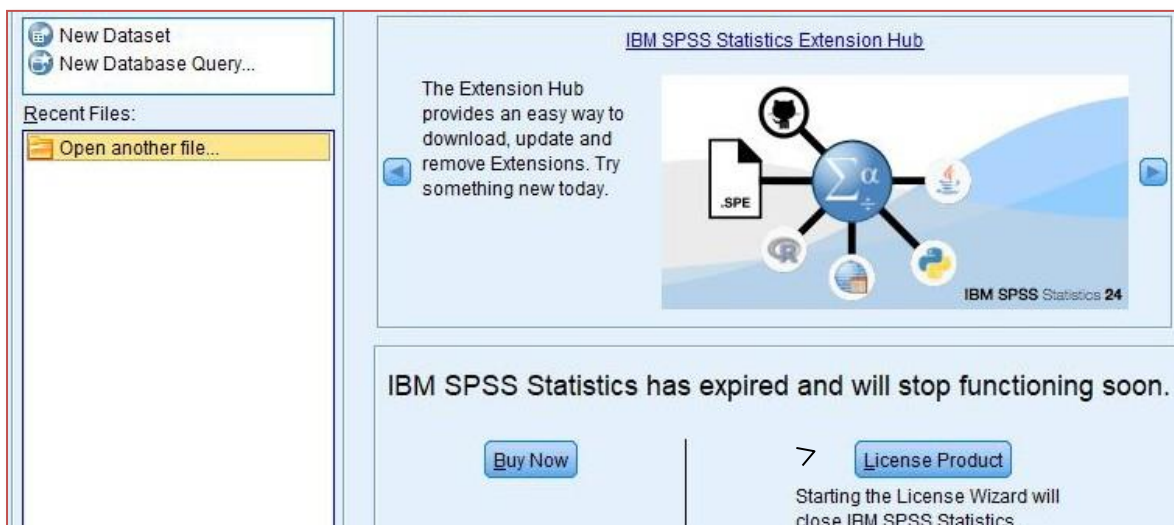
The application will install. You can follow the progress on the installer.

Installing SPSS on your PC

12. Once complete, the screen will change. Tick box 'Start IBM SPSS Statistics 24 now' and click 'Finish'.

Applying the Licence

To complete the installation and use the product, you will need to apply the licence. You must be connected to the internet to apply the licence. Please open the application from your start menu if it has not loaded automatically.

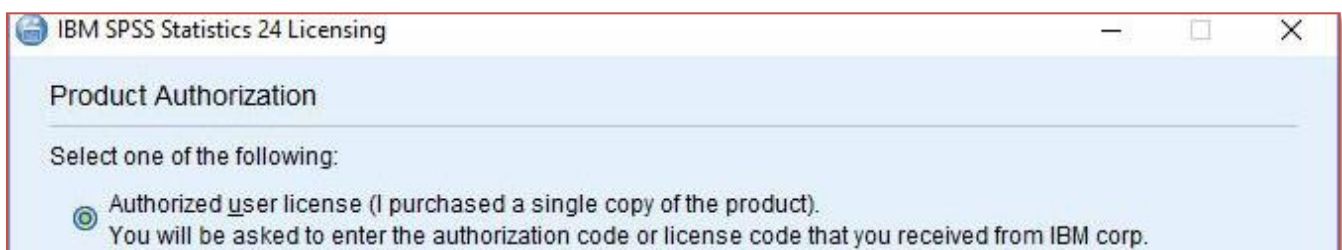


1. Click 'License Product'

The 'License Wizard' will load. It will state that there are no licences found.

2. Click 'Next'

3. Please select 'Authorized user license' and click 'Next'



You will now need to enter a licence code. Please refer back to the email sent by the Service Desk. The code can be found on 'Step 2: Apply the Licence'

**For more help
contact [IT Help](#)**

Audience:
Students and staff

Installing SPSS on your PC

4. Enter the code when prompted and click 'Next'

If the code is correct, you will see 'Authorization succeeded'

5. Click 'Next'

The following screen will confirm the licensed products and the end date before a new code is required.

Installing the Patch - NB. not all operating systems have a patch file

If there is one available for your operating system, the final stage is downloading and installing the patch file. This is necessary to get fix files and security updates.

1. Please go back to the Zendto site from the email and select the patch file.
2. Click 'Save' on the file options.
3. Click 'View downloads' when complete.



4. Right click on the file in your downloads folder and select 'Run as Administrator'
Another installation wizard will load and begin extracting files.

5. Click 'Next'

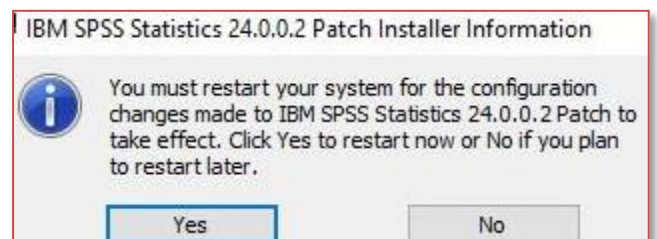
You will be presented with the licence agreement for the patch.

6. If you agree to the terms, accept them and click 'Next'

7. On screen 'Ready to Install', click 'Install'.

8. Once installed, you may need to restart your PC. Click 'Yes'.

The application is now ready to use.



**For more help
contact [IT Help](#)**

Audience:
Students and staff